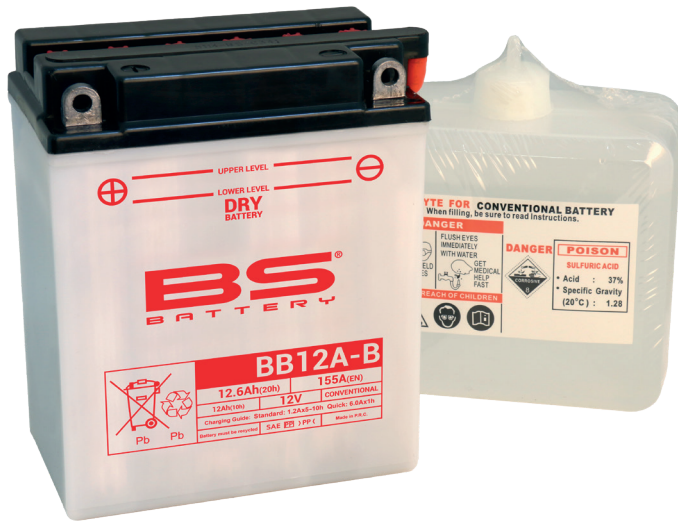


# DRY BATTERY

DRY | CONVENTIONAL

REF **BB12A-B**



**12v** VOLTAGE - V

**155A** CCA - A

**12.6Ah** CAPACITY - Ah (20Hr)

**12Ah** CAPACITY - Ah (10Hr)

## TECHNOLOGY

- Lead acid dry charged construction (absorbed acid)
- No acid in cells, must be filled with acid before use
- 6 & 12V batteries

## FEATURES

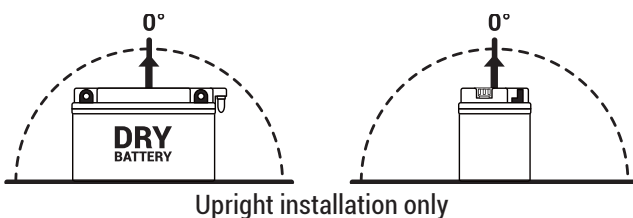
- Upright installation only
- Has to be checked periodically and refilled with water if necessary
- Internal gas emission through venting hole
- Handle with care to prevent acid spillage
- Regular life duration
- Does not need to be recharged while stocked

## UPGRADE FOR

## WEIGHT

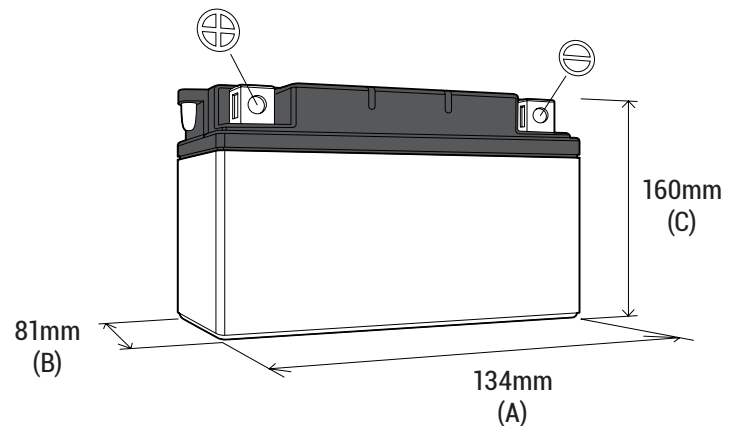
Battery (with acid): Approx 4.06kg

## MOUNTING ANGLE

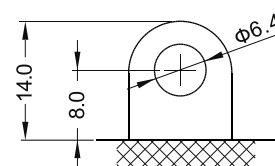


## DIMENSIONS

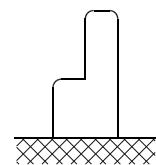
Length (A): 134mm ±2mm  
 Width (B): 81mm ±2mm  
 Container height: 160mm ±2mm  
 Total height (C): 160mm ±2mm



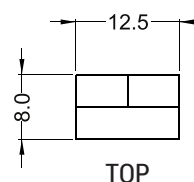
## TERMINALS (mm)



FRONT



SIDE



TOP